

# AppliChrom® OTU TriKala

# AppliChrom® OTU LipoMare

C<sub>8</sub> and C<sub>18</sub> RP-HPLC-Columns

## High Performance High Purity C<sub>8</sub> and C<sub>18</sub> media from AppliChrom

Oranienburg, September 2016

The AppliChrom series OTU TriKala and OTU Lipo Mare offers the customers a proven silica based high purity material for the high-performance RP-chromatography. HPLC columns of the OTU LipoMare or OTU TriKala series are used for a variety of uses. The highly porous silica media have 105Å pore size over a surface area of >300m<sup>2</sup>/g and are still very low foreign ion content. (<10ppm Fe, Al, Mg - Warranty; approx. 1ppm Fe, Al, Mg up to date). Investigations of molecules with up to 5,000 Dalton are possible. A special advantage of the spherical and high pressure stable silica particles are small against pressures during the chromatography combined with high long-term stability of the HPLC column. This in turn has a direct impact on the protection of your budget and your capacity through a combination of inexpensive columns with individual application support and service

### AppliChrom OTU TriKala (C<sub>8</sub> and C<sub>18</sub>)

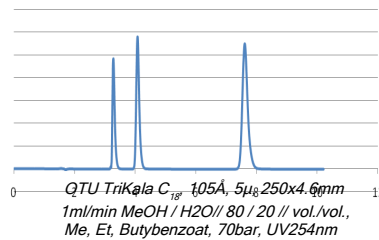
Lipophilic C<sub>8</sub> and C<sub>18</sub> media for the FP-chromatography in organic solventien.

Especially recommended for:

- steroids
- flavonoids
- alkaloids
- peptides

Also suitable for:

- gluco-Flavonoids



### AppliChrom OTU LipoMare (C<sub>8</sub> and C<sub>18</sub>)

Hydrophilic (polar) C<sub>8</sub> and C<sub>18</sub> media for the RP-chromatography in water or organic solven.

Especially recommended for:

- steroids
- flavonoids
- alkaloids
- peptides
- gluco-flavonoids
- water soluble substances

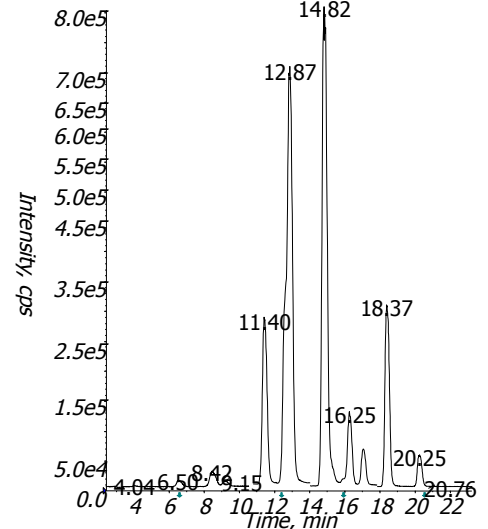
(sugar, hydrophilic derivatives of alkaloids,...)

*Why wander around in the  
distance,....?*

**AppliChrom:  
Innovative chromatography  
products from the point of origin  
of the chromatography.**

**Made in Germany**

TIC: from Sample 2 (Kal4\_polar, OTU-Säule) of 18060...



Purin derivatives, alkaloids and their degradation products using LC-MS separated on the appli chrome® OTU Lipo Mare C<sub>18</sub>, 105Å, 5µ, 250x3mm

Ask your AppliChrom Service  
Team.

### How can we help you?

Talk to our experts in person or  
send us an email.

AppliChrom®

Application & Chromatography

Dipl.-Ing.(FH) Susanne Dauwe

Germendorfer Allee 20

D-16515 Oranienburg

Tel.: **+49 3301 579293**

Fax: **+49 3301 209879**

Email: **info@applichrom.de**

**www.applichrom.de**