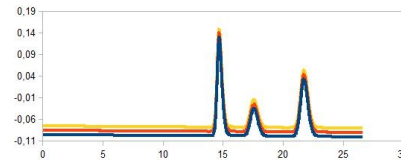
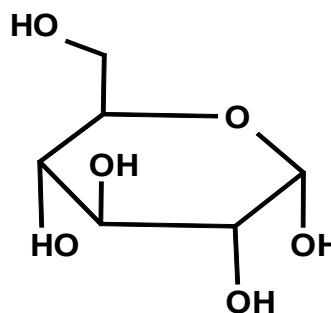


GPC / SEC / HPLC Columns

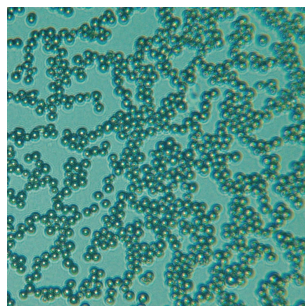
Made by AppliChrom GmbH



AppliChrom SugarSep / SugarSep-Oligo



- Sugars/Carbohydrates
- Sugar Alcohols
- Alcohols
- Carboxylic Acids



For HPLC-Analyses of

- Sugars/Carbohydrates
 - Sugar Alcohols
 - Alcohols
- Carboxylic Acids

Special Polymer for fast, easy and reliable determination using HPLC-RI or HPLC-ELSD at 60-80°C.

Advantages:

- Low cost for eluent supply. Eluent = water.
- Environmental friendly because: Eluent = water.
- Low cost for used eluent waste: Eluent = water.
- Easy to handle analysis. Direct analysis from aqueous sample!
- Low invest: Measurement possible with standard HPLC-system if connected with RI or ELSD (evaporative lightscattering detector).

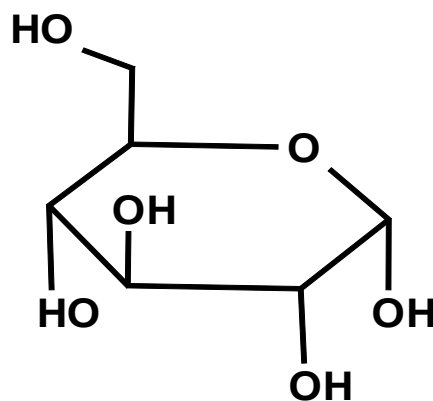
AppliChrom SugarSep-Ca – Analysis of sugars, sugar alcohols, alcohols.

AppliChrom SugarSep-Pb – Analysis of sugars

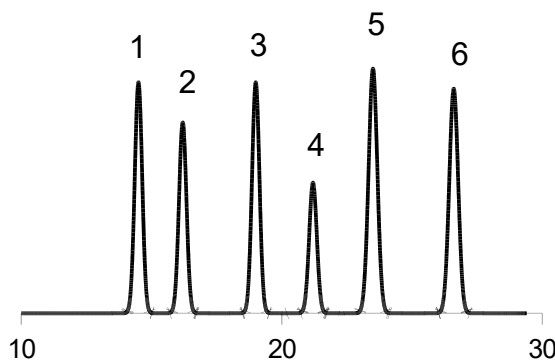
AppliChrom SugarSep-H – Analysis of sugars, sugaralcohols, alcohols and carboxylic acids.

AppliChrom SugarSep-Na – Analysis of sugars, sugaralcohols, alcohols and carboxylic acids

AppliChrom SugarSep-Oligo – Analysis of sugars, sugaralcohols, alcohols and carboxylic acids.



Identification of many sugars

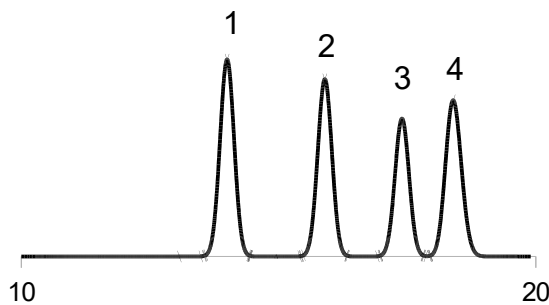


Analyte:

Mixture of

1. Sucrose (Saccarose)
2. Glucose
3. Fructose
4. Glycerin
5. Mannitol
6. Sorbitol

Column: AppliChrom SugarSep-Ca
Dimension: 300mm x 8mm
Mobil Phase: H₂O
Flow: 0.5ml/min
Temperature: 80°C
Detection: RI
Injection: 20µl sample

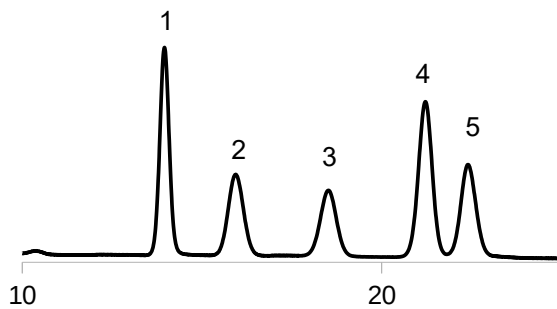


Analyte:

Mixture of

1. Sucrose (Saccarose)
2. Glucose
3. Fructose
4. Glycerin

Column: AppliChrom SugarSep-Pb
Dimension: 300mm x 8mm
Mobil Phase: H₂O
Flow: 0.4ml/min
Temperature: 60°C
Detection: RI
Injection: 20µl sample

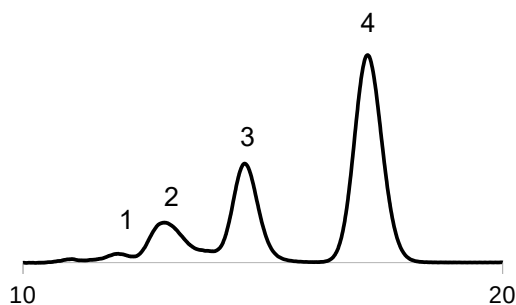


Analyte:

Mixture of

1. Sucrose (Saccarose)
2. Glucose
3. Fructose
4. Glycerin
5. Ethanol

Column: AppliChrom SugarSep-Ca
Dimension: 300mm x 8mm
Mobil Phase: H₂O
Flow: 0.5ml/min
Temperature: 80°C
Detection: RI
Injection: 20µl sample

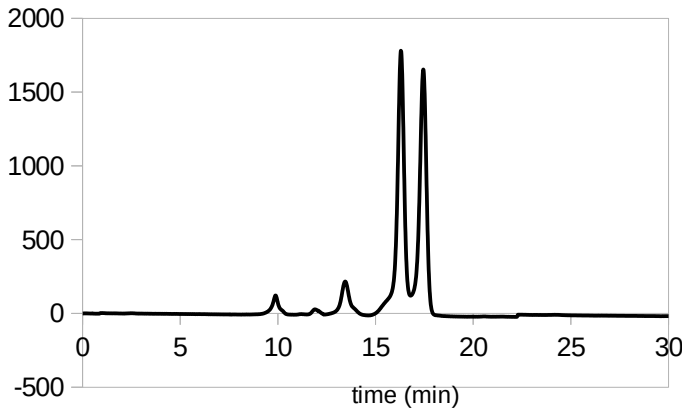


Analyte:

Honey (solvet in H₂O)

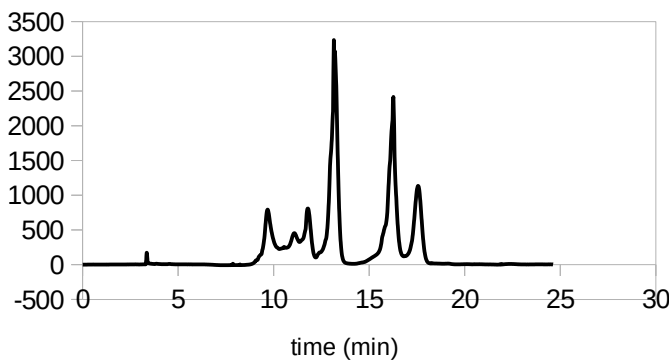
1. Dp 3
2. Dp 2
3. Glucose
4. Fructose

Column: AppliChrom SugarSep-Ca
Dimension: 300mm x 8mm
Mobil Phase: H₂O
Flow: 0.5ml/min
Temperature: 80°C
Detection: RI
Injection: 20µl sample



Analyte: Honey

Column: AppliChrom SugarSep-Na
Dimension: 300mm x 8mm
Mobil Phase: H₂O
Flow: 0.5ml/min
Temperature: 80°C
Detection: RI
Injection: 20µl sample



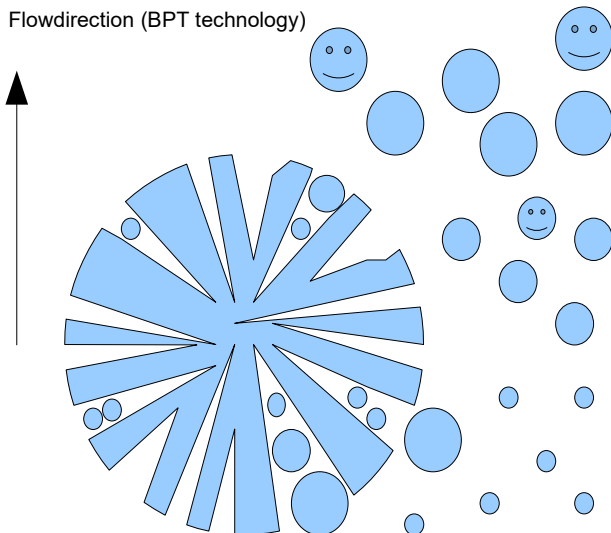
Analyte: Malt Beer

Column: AppliChrom SugarSep-Na
Dimension: 300mm x 8mm
Mobil Phase: H₂O
Flow: 0.5ml/min
Temperature: 80°C
Detection: RI
Injection: 20µl sample

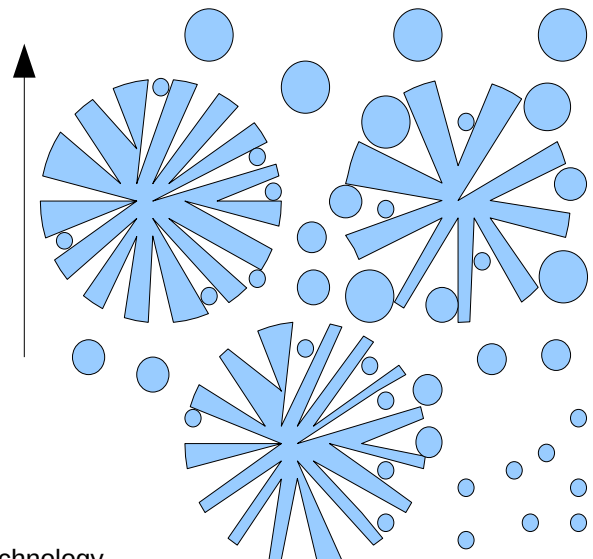
AppliChrom BPT Technology: a combination of small, medium and large pores in each particle ensures an increase of calibration range. No matching porosities effects – respective artificial shoulders in chromatogrammes known from many column combinations are significant reduced – for improving your GPC Chromatography.

Conventional GPC technology: combining columns of various poresize or by combining different poresizes in one column enlarges the calibration range – but it can lead to artefacts in the exact calibration of the GPC system that reduces molecular size accuracy determination

Flowdirection (BPT technology)



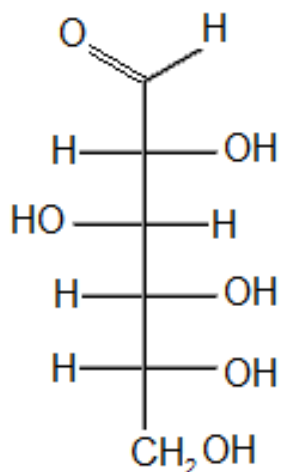
Flowdirection (conventional mixed technology)



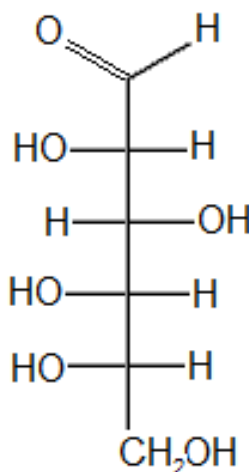
BPT – Broad Pore Technology

AppliChrom SugarSep

Catalog #	Description	Dimension	
SASCAI102508 SASCAI103008 SASCAI10508 SASCAI10308	AppliChrom SugarSep-Ca I	250mm x 8mm 300mm x 8mm 50mm x 8mm 30mm x 8mm	
SASPBW102508 SASPBW103008 SASPBW10508 SASPBW10308	AppliChrom SugarSep-Pb-Wood	250mm x 8mm 300mm x 8mm 50mm x 8mm 30mm x 8mm	
SASHI102508 SASHI103008 SASHI10508 SASHI10308	AppliChrom SugarSep-H I (SO ₃ H)	250mm x 8mm 300mm x 8mm 50mm x 8mm 30mm x 8mm	
SASHII102508 SASHII103008 SASHII10508 SASHII10308	AppliChrom SugarSep-H II (SO ₃ H)	250mm x 8mm 300mm x 8mm 50mm x 8mm 30mm x 8mm	
SASHIII102508 SASHIII103008 SASHIII10508 SASHIII10308	AppliChrom SugarSep-H III (SO ₃ H)	250mm x 8mm 300mm x 8mm 50mm x 8mm 30mm x 8mm	
SASNA102508 SASNA103008 SASNA10508 SASNA10308	AppliChrom SugarSep-Na	250mm x 8mm 300mm x 8mm 50mm x 8mm 30mm x 8mm	

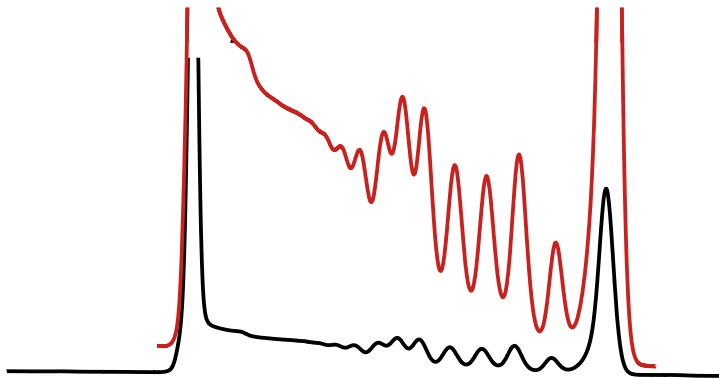


D-Glucose



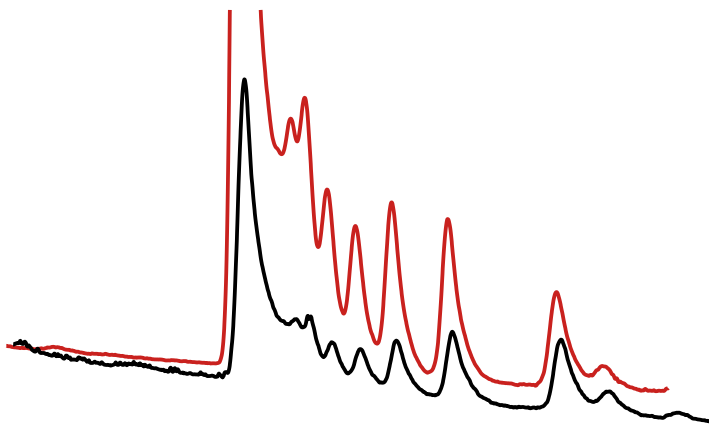
L-Glucose

Oligosaccharide analysis in water



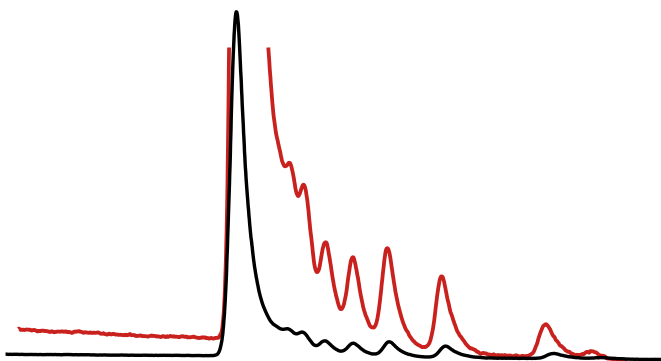
Analyte: **Maltodextrin 19**
Detailed view

Column: AppliChrom SugarSep-Oligo-Na
Dimension: 300mm x 8mm
Mobil Phase: H₂O
Flow: 0.25ml/min
Temperature: 70°C
Detection: RI
Injection: 20µl sample



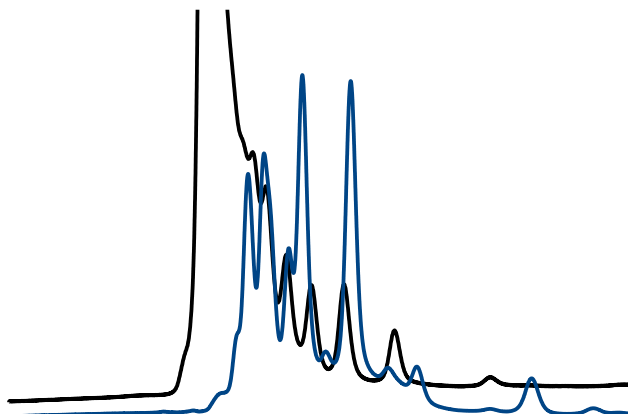
Analyte: **Maltodextrin 12**
Detailed view

Column: AppliChrom SugarSep-Oligo-Na
Dimension: 300mm x 8mm
Mobil Phase: H₂O
Flow: 0.25ml/min
Temperature: 70°C
Detection: RI
Injection: 20µl sample



Analyte: **Maltodextrin 6**
Detailed view

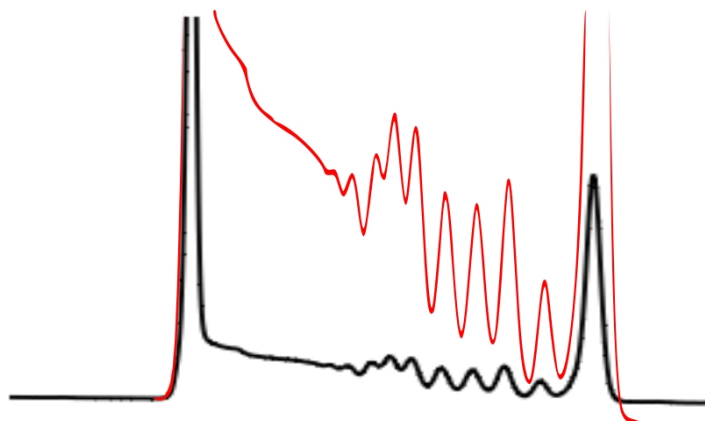
Column: AppliChrom SugarSep-Oligo-Na
Dimension: 300mm x 8mm
Mobil Phase: H₂O
Flow: 0.25ml/min
Temperature: 70°C
Detection: RI
Injection: 20µl sample



Analyte: **Maltodextrin 12 (black)**
Inulin (blue)

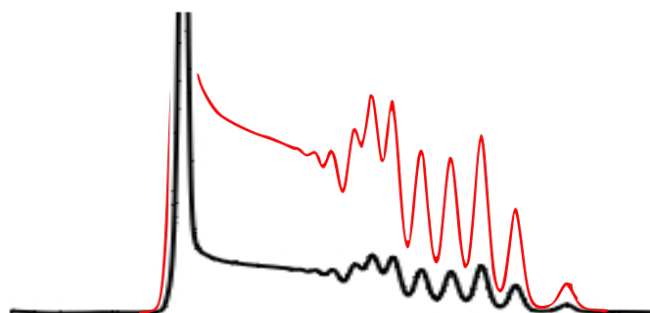
Column: AppliChrom SugarSep-Oligo-Na
Dimension: 300mm x 8mm
Mobil Phase: H₂O
Flow: 0.25ml/min
Temperature: 70°C
Detection: RI
Injection: 20µl sample

Oligosaccharide analysis in water



Analyte: Maltodextrin 12
+ extra Glucose
Detailed view

Column: AppliChrom SugarSep-Oligo-Ag
Dimension: 300mm x 8mm
Mobil Phase: H₂O
Flow: 0.25ml/min
Temperature: 80°C
Detection: RI
Injection: 20µl sample



Analyte: Maltodextrin 12
without extra Glucose
Detailed view

Column: AppliChrom SugarSep-Oligo-Ag
Dimension: 300mm x 8mm
Mobil Phase: H₂O
Flow: 0.25ml/min
Temperature: 80°C
Detection: RI
Injection: 20µl sample

Catalog #	Description	Dimension	
SASOLNa101508 SASOLNa102508 SASOLNa103008 SASOLNa10508 SASOLNa10308	AppliChrom SugarSep-Oligo-Na	150Mm x 8mm 250mm x 8mm 300mm x 8mm 50mm x 8mm 30mm x 8mm	Oligosaccharide analysis in water
SASOLAg101508 SASOLAg102508 SASOLAg103008 SASOLAg10508 SASOLAg10308	AppliChrom SugarSep-Oligo-Ag	150Mm x 8mm 250mm x 8mm 300mm x 8mm 50mm x 8mm 30mm x 8mm	Oligosaccharide analysis in water

A general guarantee for the functionality with all analytes cannot be given. In individual cases, it is always advisable to discuss the issue with our product specialists. An application laboratory is also available in Oranienburg for your service. Please contact us.

Errors and changes excepted. Research and development products.

Not tested for clinical, diagnostic, or food use.

Version 11/2021

Inquiry Form For Forwarding to AppliChrom GmbH

To place an order please fill in this form and send it by mail or fax to:

AppliChrom GmbH
Germendorfer Allee 20
D-16515 Oranienburg
Germany

Telephone: +49 (0)3301 579293
Fax: +49 (0)3301 209879
Email: info@applichrom.co
Web: www.applichrom.com

Catalog	Description	Dimension

bulk quantities on request

address

name

company / institute

address

country

telephone number

e-mail

VAT-number

comment

